



Friday 14th
January
2022

WhatsUp @
EXETER

Crew Champions Award

7.1.22

FS2: Benjamin and Gracie-May

Year 1: Lily-Mae JP, Bruce and Sonia

Year 2: Rodrigo, Lena and William

Nurture: Noah

Year 3: Alby, Samir and Aimee

Year 4: Olivia K, Sienna and Taylin

Year 5: Cheya-Lily, Josh R, Melody and Clyde

Year 6: Metina, Katie, Caleb and Denissa

Kirby: Rachel

14.1.22

FS2: Sophia and Annabelle

Year 1: Zofia, Lillymae W and Kyle

Year 2: Olaf, Lleyton and Esmay

Year 3: Connor, Jack and Maisey

Year 4: Charlotte, Brodie and Cristian

Year 5: Kira, Reuben, Aeliah and Sinisa

Year 6: Olivia-Lillie, David Pi, Natalia and Charlie

Message from Mr Nicholls – Head of School:

A belated 'Happy New Year' from all the children, staff and governors at Exeter A Learning Community.

We have returned to school after an enjoyable end to December. We are so proud of how our youngest children performed at their nativities and it was a pleasure to see parents attending KS1's Christmas Songs extravaganza and not to mention the amazing turn out of the Christmas Fair.

Our children have made a fantastic start to the Spring term and long may it continue.

Covid-19 Update

We returned to school with some disruption after the Christmas break with a slight rise in cases of Covid-19 across different pockets around the school. The great news is that our children are accessing our planned learning for all year groups, which is an incredible feat by our awesome team. For children who are isolating, but are well, online learning is available for them to access. It is really important that your child/ren continue with their learning journeys so they also continue to feel connected to the school and their friends.

If there are any further rises in year groups or key stages, we will let you know with any advice given by Public Health England or the Department for Education. This might include taking more regular lateral flows so we can catch those children whom might not be symptomatic. I have heard from the Local Authority that supplies of LFTs have increased in the area, too. Please continue to ensure face coverings are worn when entering the school building.

On this newsletter, there are updated charts to illustrate the new Covid isolation regulations.

Despite the potential challenges over the coming weeks, all of our staff at Exeter will continue to maintain as normal as possible school environment for your child/ren to build on the great progress from last term.

Thank you for your continued support, positivity and co-operation as we all look forward to a more optimistic and settled 2022.



Friday 14th
January
2022

WhatsUp @
EXETER

Upcoming Dates

Monday 17th to Thursday 20th – Year 5 Bikeability training

Friday 21st January – Year 3/4 Bikeability training

Monday 14th – Friday 18th February – Half term

Monday 21st February – Training Day (children return Tuesday 22nd)

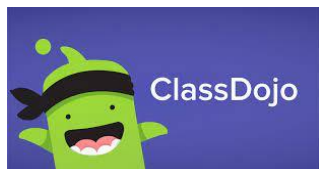
Tuesday 15th March - Year 4 visit to Sealife Centre

School Trips

We are hopeful that we are returning to some level of normality and therefore have started to plan some school trips to enhance the children's learning experience. We appreciate that trips can be an expense, especially when you have more than one child in school, so we have split the payments over a number of months. We ask for no more than £5 per month per trip. As you can appreciate, as a school we cannot run these trips at a loss, so rely on the support of all parents to ensure these great days go ahead.

At present, we have trips booked for Year 2 (Hunstanton), Year 3 (Cadbury's World), Year 4 (Sealife Centre) and Year 5 (Space Centre). All trips are currently at risk from being cancelled due to limited payments.

If your child is in receipt of pupil premium, we are able to offer the trip to you at a discounted price, please contact the school office or send a message via the Gateway APP so we can check if you qualify. Payments are asked for by the first Friday of each month. Thank you for your support.



Class Dojo

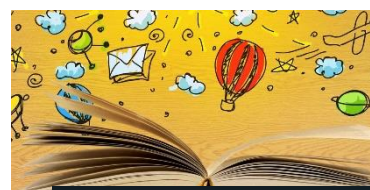
If you are not yet on class dojo, please speak to your child's class teacher to get a login. This is the first form of communication that we use with parents.

Homework expectations

At Exeter, we pride ourselves on allowing the children to be children once they are at home and not be bogged down with lots of



homework every night. All we ask is that over a week, they read at home at least 5 times, and this is recorded in their reading record. It is proven that the more a child reads at primary level, the higher their chances of higher-level jobs once they leave school.



The other homework we set is on TTS (Timetables Rockstars) or Numbots. We ask they play at least 30 minutes a week (Friday to Thursday), ideally in short sessions rather than one longer one. Certificates are handed out each Friday to those who make the most progress (based on their speed of answering getting quicker, not necessarily the highest score or longest time played). We know every parent wants the best for their child/ren so please support them in these two areas at home.

Topics this term:

FS2: Once Upon a Time

We will find out about the world of traditional tales, nursery rhymes and fairy tales as we focus on storytelling and writing. We will be dusting off our aprons and doing a spot of baking this term. We are so excited to become authors and begin to write our own stories.



In class this half term we will be reading a range of traditional stories including The Little Red Hen, The Little Red Hen Makes Pizza, The Gingerbread Man, Three Little Pigs, Little Red Riding Hood, Three Billy Goats Gruff, The Enormous Turnip, Jack and the Beanstalk and lots more!

As well as their weekly library book, your child will bring home a reading book linked to the sounds they know. Please listen to them read every night. Ask them to identify the title, author and blurb and to predict what they think will happen. As they are reading ask them questions about what they are reading. Please make comments in their reading record books so we know when to change their book. Reading books will be changed weekly: on a Friday.

Year 1 – Enchanted woodland

If you step into an enchanted woodland, I wonder what you will find? Maybe magical animals or characters from a fairy story? Maybe just beautiful nature that will take your breath away? How would you find your way around such a woodland?

Let's learn about directional language and points of the compass that you could use to help you find your way in the wood. We can learn all about maps and how to read them.

We are going to gain knowledge about local history and the incredible Rockingham Forest. How have the woodlands changed and been used in the past?

What can we learn about seasons and weather in a woodland?

Let's start to take a peek into the magical world of woodlands and the beauty and changes within them.





Friday 14th
January
2022

WhatsUp @
EXETER



Year 2 – Tunnels, Turrets and Towers

See the castle ahead? Get ready to invade its mighty walls. Shoot a projectile with an archer's aim. Head across the drawbridge, over the moat and up to the top of the tower. Meet Rapunzel who lives in a tall, tall tower. Let's build a brand new one. Whose is the tallest? Can you measure it? Then dig deep, deep down, making burrows and tunnels, just like the animals who live underground. What's that sound? I hear little hooves going trip, trap, trip, trap, over the rickety bridge. Watch out for the angry troll underneath. He likes to gobble up little girls and boys. Make sure your bridge is sturdy enough to take our weight and get us safely to the other side. And finally, meet three little pigs who need your help to build a strong fortress. Inside its strong walls, they'll be safe from the big, bad wolf. No huffing and puffing will blow your fortress down.

Year 3 – Tremors

It's time to turn off technology and take a look at the world around you. Time to learn more about the earth we all live on. What can you see? What do you notice? Has the earth always been the same, or has it evolved over time? Let's spend this term researching, drawing, explaining and analysing the earth's natural form now and in the past. What will make you tremble with excitement?



Year 4 – Blue Abyss

Grab your wetsuit. We're going deep into an underwater world of incredible coral and mysterious sea creatures. We are about to learn about life in the oceans of the world. Can you pick a favourite fish, plant or animal? What do real divers get up to below the surface? Where are the oceans in the world and how are they different? How is their physical geography linked to our lives as humans on Earth? What happens to all the rain that falls into the oceans? Time to go a little deeper into our seas and explore their hidden worlds. Flippers on? Snorkel ready? Let's head into the Blue Abyss.

Year 5 – Pharaohs

Let's travel back 5000 years, to the dusty realms of ancient Egypt. Cruise along the Nile, entering a world of mysteries and curses, mummies and kings. Find out about life on the river's fertile banks, discovering Egypt and its fascinating culture.

Unravel the secrets of ancient tombs, using historical sources and ancient artefacts. Find out about powerful pharaohs and grandiose gods. Now open the doorway to ancient Egypt. Who knows what treasures you will find?





Friday 14th
January
2022

WhatsUp @
EXETER

Year 6 – Frozen Kingdom

Welcome to the planet's coldest lands. Vast wilds and hostile territories; incredibly beautiful, yet often deadly. Take shelter from the elements or fall prey to icy winds and the deepest chill. Trek bravely and valiantly across treacherous terrain to the ends of the Earth, treading deep in snow or being pulled by a team of mighty sled dogs. Be alert, for magnificent mammals roam these lands, sometimes hungry or fresh for a fight. Perhaps a hungry polar bear or an Arctic fox is hunting rodents as swift as the wind. Research facts and figures of climate, temperature and ecosystems.



Attendance

Our school / government minimum expectation is **96%**

Year group	Attendance (Wednesday 5 th to Friday 7 th January 2022)
Reception	96.2
Year 1	93.1
Year 2	91.9
Year 3	90.9
Year 4	96.4
Year 5	89.0
Year 6	92.1

Year group	Attendance (Monday 10 th to Friday 14 th January 2022)
Reception	95.1
Year 1	94.2
Year 2	87.8
Year 3	86.1
Year 4	94.0
Year 5	94.6
Year 6	87.0

Next Newsletter

Friday 28th January 2022

Isolation guidance

Changes to Isolation Periods.

The isolation period is still 10 days but can be reduced to 5 full days (as long as your child is well enough and without a temperature) and receives 2 consecutive negative LFD results. The earliest they should take the first LFD test is on day 5. Any positive test after a first negative test would mean that the first negative is null and void. This would reset the isolation period and your child would still require 2 consecutive negative tests from this point forward. You must register results with the [NHS Website here](#) and you must e-mail both those results to school. You can order a pack of [LFD tests here](#).

Anyone who tests positive must isolate for a full 5 days.										
Day Zero	Day 1	Day 2	Day 3	Day 4	Day 5	Day 6	Day 7	Day 8	Day 9	Day 10
Day Zero is the day symptoms started or the day the test was taken if asymptomatic. Day 1 of isolation is the day after Day Zero.					Negative LFD	Negative LFD				
Scenario 1 A negative test on Day 5 and then Day 6. Isolation ends on Day 6 once the 2 nd LFD test is negative.										
Anyone who tests positive must isolate for a full 5 days.										
Day Zero	Day 1	Day 2	Day 3	Day 4	Day 5	Day 6	Day 7	Day 8	Day 9	Day 10
Day Zero is the day symptoms started or the day the test was taken if asymptomatic. Day 1 of isolation is the day after Day Zero.					Positive LFD	Negative LFD	Negative LFD			
Scenario 2 A negative test on Day 6 and then Day 7. Isolation ends on Day 7 once the 2 nd LFD test is negative.										
Anyone who tests positive must isolate for a full 5 days.										
Day Zero	Day 1	Day 2	Day 3	Day 4	Day 5	Day 6	Day 7	Day 8	Day 9	Day 10
Day Zero is the day symptoms started or the day the test was taken if asymptomatic. Day 1 of isolation is the day after Day Zero.					Positive LFD	Positive LFD	Negative LFD	Negative LFD		
Scenario 3 A negative test on Day 7 and then Day 8. Isolation ends on Day 8 once the 2 nd LFD test is negative.										
Anyone who tests positive must isolate for a full 5 days.										
Day Zero	Day 1	Day 2	Day 3	Day 4	Day 5	Day 6	Day 7	Day 8	Day 9	Day 10
Day Zero is the day symptoms started or the day the test was taken if asymptomatic. Day 1 of isolation is the day after Day Zero.					Positive LFD	Positive LFD	Positive LFD	Negative LFD	Negative LFD	
Scenario 4 A negative test on Day 8 and then Day 9. Isolation ends on Day 9 once the 2 nd LFD test is negative.										
Anyone who tests positive must isolate for a full 5 days.										
Day Zero	Day 1	Day 2	Day 3	Day 4	Day 5	Day 6	Day 7	Day 8	Day 9	Day 10
Day Zero is the day symptoms started or the day the test was taken if asymptomatic. Day 1 of isolation is the day after Day Zero.					Positive LFD	Positive LFD	Positive LFD	Positive LFD	Negative LFD	Negative LFD
Scenario 5 A negative test on Day 9 and then Day 10. Isolation ends on Day 10 once the 2 nd LFD test is negative.										
Anyone who tests positive must isolate for a full 5 days.										
Day Zero	Day 1	Day 2	Day 3	Day 4	Day 5	Day 6	Day 7	Day 8	Day 9	Day 10
Day Zero is the day symptoms started or the day the test was taken if asymptomatic. Day 1 of isolation is the day after Day Zero.					Positive LFD	Positive LFD	Positive LFD	Positive LFD	Positive LFD	Positive LFD
Scenario 6 Isolation will end at 11:59pm on day 10 so no need to test as child can return on Day 11.										

In any scenario, the isolation period can only end if your child no longer has a high temperature. This applies even if they have tested negative twice. If children still have a high temperature after Day 10, they should stay off school and seek medical advice such as contacting your GP or phoning 111



Friday 14th
January
2022

WhatsUp @
EXETER

Exeter a learning community



2022

Term 3

Training Day
Re-open
Closes

Tuesday 4 January
Wednesday 5 January
Friday 11 February

Term 4

Training Day
Re-open

Monday 21 February
Tuesday 22 February

Easter

Closes

Friday 1 April

Term 5

Re-open

Tuesday 19 April

**May Bank
Holiday**

Closes
Re-open

Friday 29 April
Tuesday 3 May

**Spring Bank
Holiday**

Closes

Thursday 26 May

Term 6

Re-open
Closes
Training Day

Monday 6 June
Thursday 21 July
Friday 22 July

